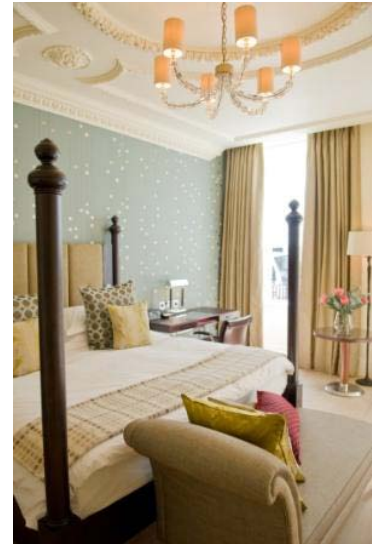
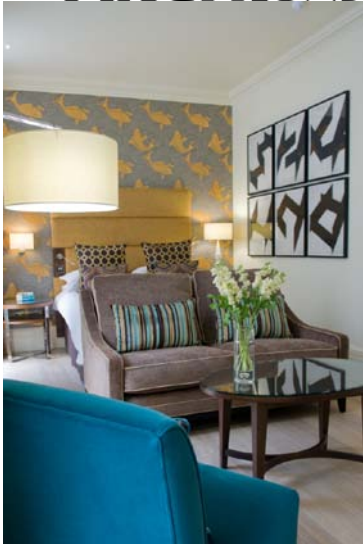


THE ARCH LONDON



PROVOCATIVE

INTIMATE

INSPIRING

An elegant and quietly glamorous hotel close to Marble Arch and Hyde Park, The Arch London is a stylish newcomer to the London scene. Complementing the chic boutiques and fashionable destinations of the Marylebone area, the hotel epitomises London Townhouse living. Spanning seven Georgian townhouses and two mews homes, this 82 guest room hotel has been designed to combine its English heritage with contemporary European style. A feeling of space and tranquillity is immediate upon entering the open lobby with direct access to HUNter 486, the hotel's food and drink areas.

BEDROOMS & SUITES

The 82 guest rooms, including 9 suites, have been created incorporating the colours of the neighbourhood, with each room showcasing one of the 10 individually designed colour schemes. Every room features a rain shower and most with in-bath TV's, a working desk, flat screen televisions, full Sky HD package including sports and movies, internet radio with over 10,000 channels, CD/DVD player with access to the in-house movie library, iPod docking station, complimentary wireless internet, Nespresso coffee machines and tea making facilities, complimentary soft drinks personal bar, air-conditioning, US and EU adaptors.

HUNter 486

HUNter 486, brings together classic glamour and timeless hospitality reflecting local colour and introducing a new dimension to London's drinking and eating experience. This incorporates a dining area off the open plan kitchen, the Library, the Bar and Le Salon de Champagne.

The Library with Taschen bookcases is a stylish, relaxed area of the hotel to enjoy afternoon tea or a martini from the martini cabinet, expertly shaken in front of you. Le Salon de Champagne with original designer chairs, high banquette seating and a graffiti ceiling of wine tasting notes offers the guest a lavish area to match their mood. The open plan kitchen offers honest and real food, with an all day grazing menu in a friendly environment. Each space has a story; each story created and designed to inspire the guests.

PRIVATE DINING & EVENTS

The Arch London has one private dining room, WHItehall 944 which is available for hire for meetings, events and private dinners. The Library and Study are also available for exclusive hire, whether for a product launch, press junket or an intimate meeting.

HEALTH & FITNESS

There is a fully equipped gym featuring the latest Technogym equipment. The hotel can also offer guests personal trainers and yoga instructors on request.

GUEST SERVICES

- 24 Hour Room Service
- 24 Hour Reception and Concierge Service
- Complimentary Wireless Connectivity throughout and low cost telephone rates
- Twice daily servicing of your room
- Complimentary soft drinks personal bar and Nespresso machines with tea facilities
- Same day laundry service
- Multi-lingual staff
- Complimentary daily newspaper



LOCATION

50 Great Cumberland Place
London W1H 7FD

Tel: +44 (0) 20 7724 4700

Fax: +44 (0) 20 7724 4744

E-mail: info@thearchlondon.com

Web: www.thearchlondon.com

DIRECTIONS

By Air

London Heathrow is the city's main airport and is around a 40 minute drive from the hotel. Alternatively, the Heathrow Express takes 15 minutes into Paddington Station, approximately a 5 minute transfer from the hotel.

London is also served by Gatwick, London City, Luton and Stansted Airports.

By Car

Vehicles in central London are subject to a congestion charge Monday to Friday 7am to 6.30pm. Parking is available close by and we offer Valet parking.

By Train

The nearest underground station is Marble Arch, served by the Central Line and only a 2 minute walk away. London is well served by the national rail system including the new express Eurostar service to Paris and Brussels via St Pancras International.

